

DEADLY SKILLS

PUZZLE & ACTIVITY BOOK

The Ultimate Collection of Puzzles,
Mind Benders & Games to Keep Your Brain
Sharp & Ready for Any Situation



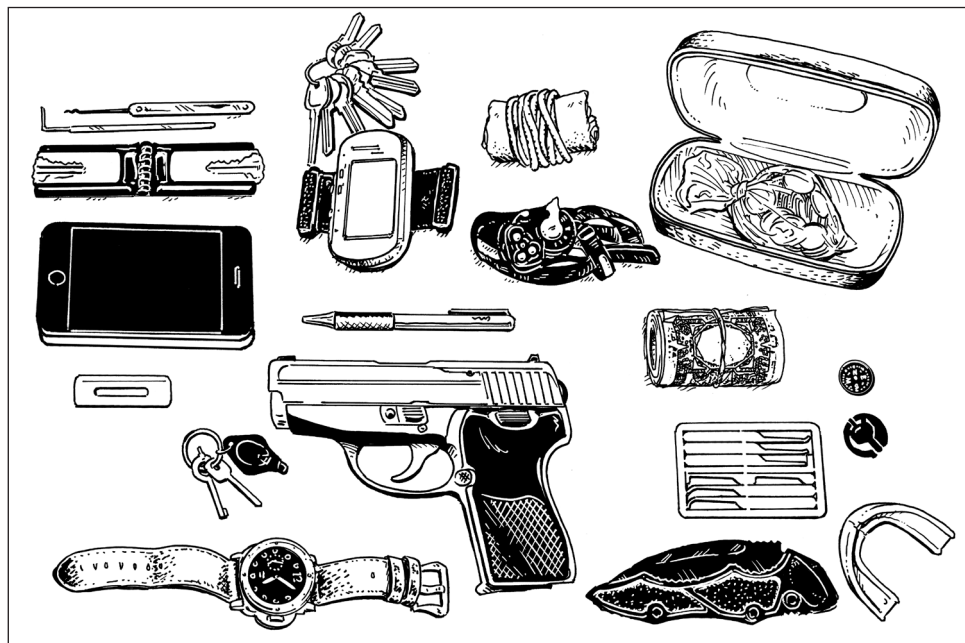
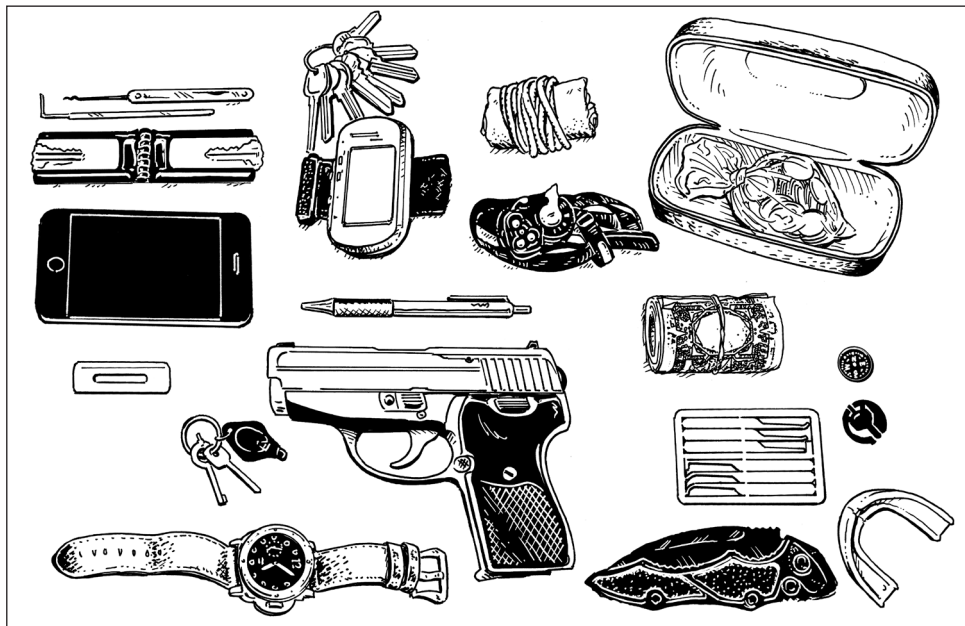
Navy SEAL, Ret.

CLINT EMERSON

Bestselling Author of *100 Deadly Skills*

No. 093: SPOT THE DIFFERENCE

CONOP: Spot the 10 differences between the two pictures.



Puzzler Your **NEW** Puzzle Experience

No.1 2017 **£3.99**

Fantasy Quest

Amazing puzzle-based adventures

Quest No.1

The Enchanted forest

- Follow the story through the woodland
- Complete the challenges along the way
- Lift the curse and save the forest
- Find the magical Orb and escape



£3.99



UK Retailer Off Sale: 27th January 2018



COMPLETE THE QUEST



The Riddling Chair

The relief of getting beyond the village is short-lived, the silence between the three of you an awkward reminder of the friction and all those missing explanations. Lycia strides ahead. As you move alongside Muro, he sighs. "There's nothing I can tell you right now, Echo," he says. "You need to keep collecting the runes for the scroll if you want to escape from here."

"Muro," you say as calmly as you can, "in the last day, I've been told I have a home I didn't know about, a life I didn't know about, and that the fate of this place rests on me. I've done everything you asked. Please! Do something for me."

Muro rolls his eyes, and stops. "Okay, Echo," he sighs. "Tell me something you want to know."

"You can start with Elden," you reply. "What is Elden?" "It's not what. It's who," says Lycia, uncharacteristic impatience in her voice. You hadn't noticed her fall back to join the conversation.

You're momentarily distracted by an object that seems wildly out of place, even by the standards of this weird world. "Er, there's a random chair just sitting over there," you point out.

"Oh no," Muro moans, "a riddling chair. It's just as well you're good at these. Sit in it, Echo, and the chair will set you a riddle. Every line but the last one will contain a clue to a letter, and the last line will give you a clue to the word that all those letters spell. The good news is that the middle letter of the word will be a letter rune."

My first is in *turret* as well as in *spire*,

My second's in *tower* but never in *higher*,

My third is in *storey* but not seen in *sky*,

My fourth is in *waterfall* and also in *fly*,

My fifth is in *vista* though not in *bridge*,

My sixth is in *gorge* but isn't in *ridge*,

My seventh's in *precipice* and too in *peak*,

My whole's not for those whose head for heights is weak.

	A	B	C	D
1	✱ □ ● ▲ ★ □ ▲ ●	▲ ★ □ ▲ ● ✱ ★ □	▲ ▲ ● ★ ▲ ▲ ● ▲	● ▲ ▲ ● ✱ ▲ ▲ □
2	▲ ▲ □ ✱ ▲ ▲ ● ★ ✱ ▲	▲ ▲ ✱ ▲ ▲ ● ★ ▲ ▲	▲ ▲ ▲ ▲ ● ▲ ▲ ▲	▲ ▲ ▲ ▲ ▲ ▲ ▲ ▲
3	□ ▲ ▲ ▲ ✱ ▲ ▲ ▲ ▲	▲ ▲ ▲ ▲ ▲ ▲ ▲ ▲	▲ ▲ ▲ ▲ ▲ ▲ ▲ ▲	▲ ▲ ▲ ▲ ▲ ▲ ▲ ▲
4	▲ ▲ ▲ ▲ ▲ ▲ ▲ ▲	▲ ▲ ▲ ▲ ▲ ▲ ▲ ▲	▲ ▲ ▲ ▲ ▲ ▲ ▲ ▲	▲ ▲ ▲ ▲ ▲ ▲ ▲ ▲

The Library's Cipher

The first room you enter from the entrance hall is clearly a library. The crackle of a fire suggests a warm, welcoming room, but only for a split second. All the library offers now is cold, and books. Mountains of books.

The two of you stop as you hear a growl in the distance. Muro perhaps? But the noise stops almost as soon as it starts.

"My father told me about this place," Lycia says. "Malafrente was once imprisoned in this castle. It's no wonder that he might choose it as a scene of revenge." "Do you think Malafrente's here?" you ask, dreading the answer.

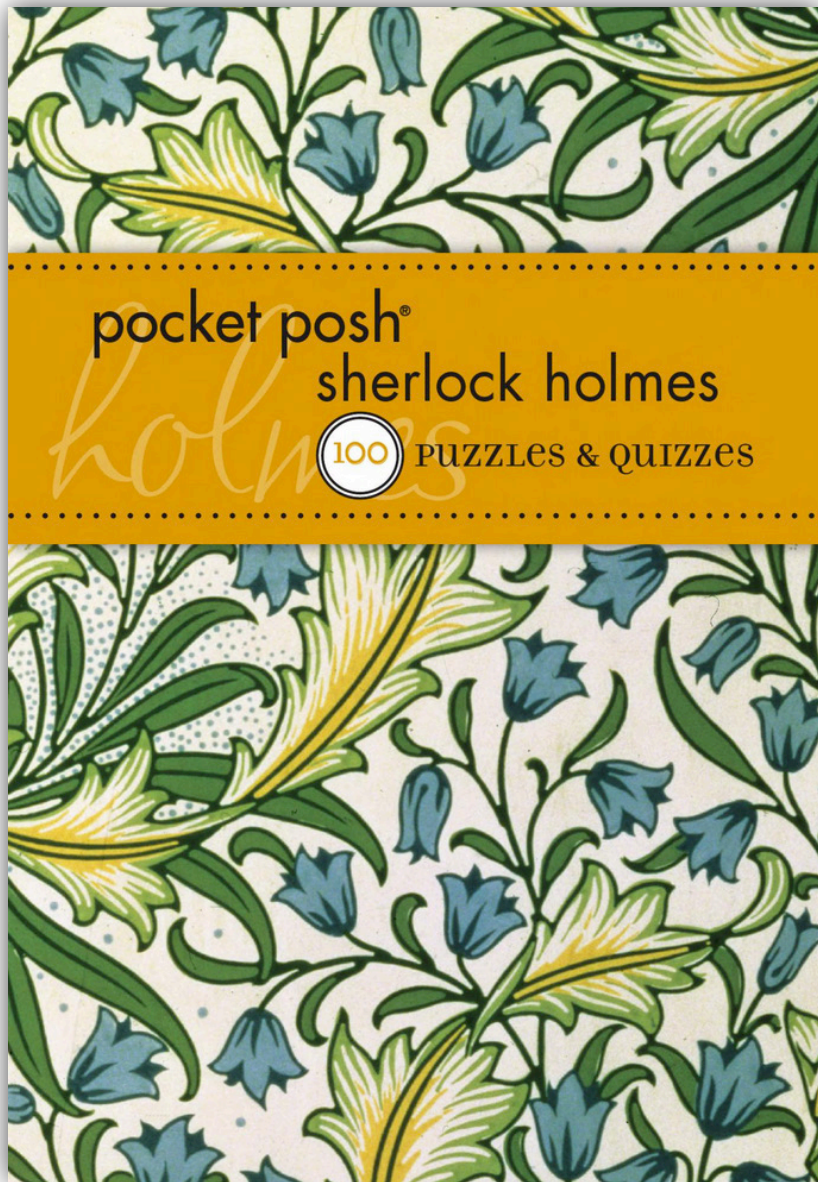
"I don't know," Lycia responds, "but he's bound to be watching somehow, especially if the orb really is here."

The orb. You'd completely forgotten about it, but all of a sudden, it feels like you're closer to home than you've been in days.

"I've heard of a hidden room in here," Lycia remembers. "But I've no idea how to find it."

"There are symbols carved in the panel up there," you point out. "They may show us the location of the secret room." You study the panel, and realise that only two squares in the entire diagram share the same four symbols. Those two squares must be the coordinates of the room.

To get the co-ordinates for the secret room, you need to find the two squares in the carving that contain identical shapes.



pocket posh®
sherlock holmes

100 PUZZLES & QUIZZES

Complete the Quotes

Using the list of words, complete each of these quotes by Sherlock Holmes.

CURIOUS GUESS SEE ELIMINATED TRUTH DOG

DISCOVER IGNORANCE OBSERVE

INVENT IMPROBABLE KNOWLEDGE REMAINS

- 1 "When you have _____ the impossible whatever _____, however _____, must be the _____."
- 2 "To the _____ incident of the _____ in the night-time."
- 3 "His _____ was as remarkable as his _____."
- 4 "I never _____. It's a shocking habit-destructive to the logical faculty."
- 5 "You _____ but you do not _____."
- 6 "What one man can _____, another can _____."

Who Lives There?

Can you match the character to their home?

BRIONY
LODGE

THE CEDARS

PONDICHERRY
LODGE

APPLEDORE
TOWERS

RIDLING
THORPE
MANOR

STOKE
MORAN

BIRLSTONE
HOUSE

IRENE ADLER

BARTHOLOMEW SHOLTO

JOHN & IVY DOUGLAS

HILTON & ELSIE CUBITT

MR. & MRS. ST. CLAIR

CHARLES AUGUSTUS
MILVERTON

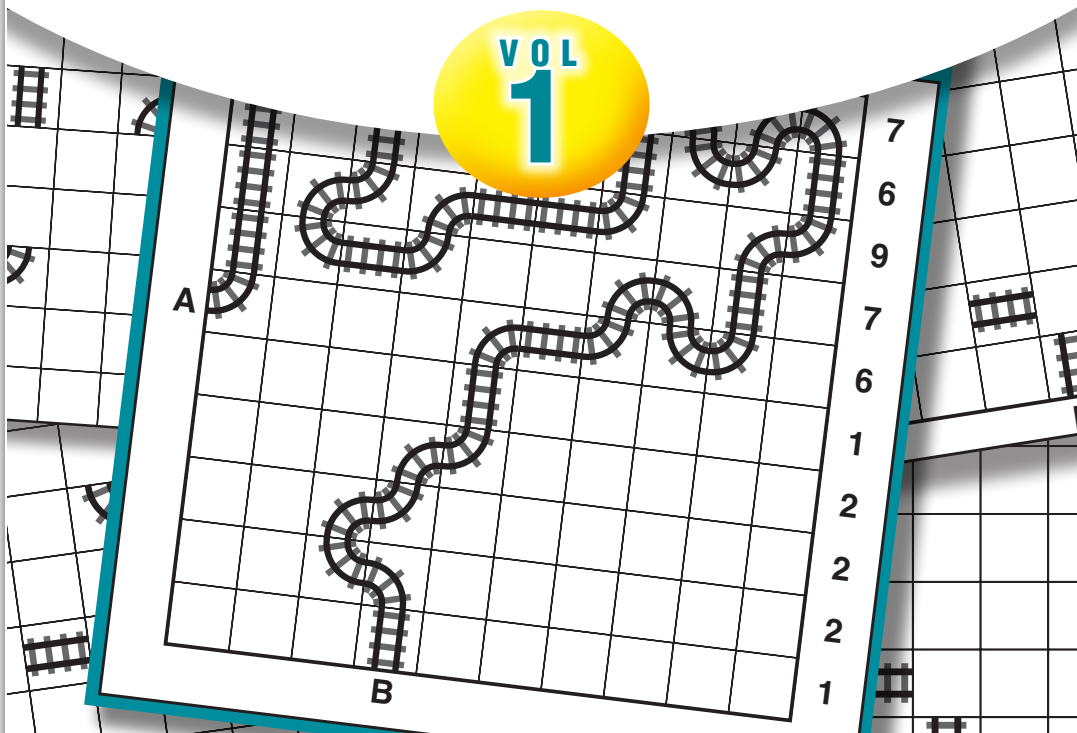
DR. ROYLOTT

NEW EDITION

Puzzler[®]

TRAIN TRACKS

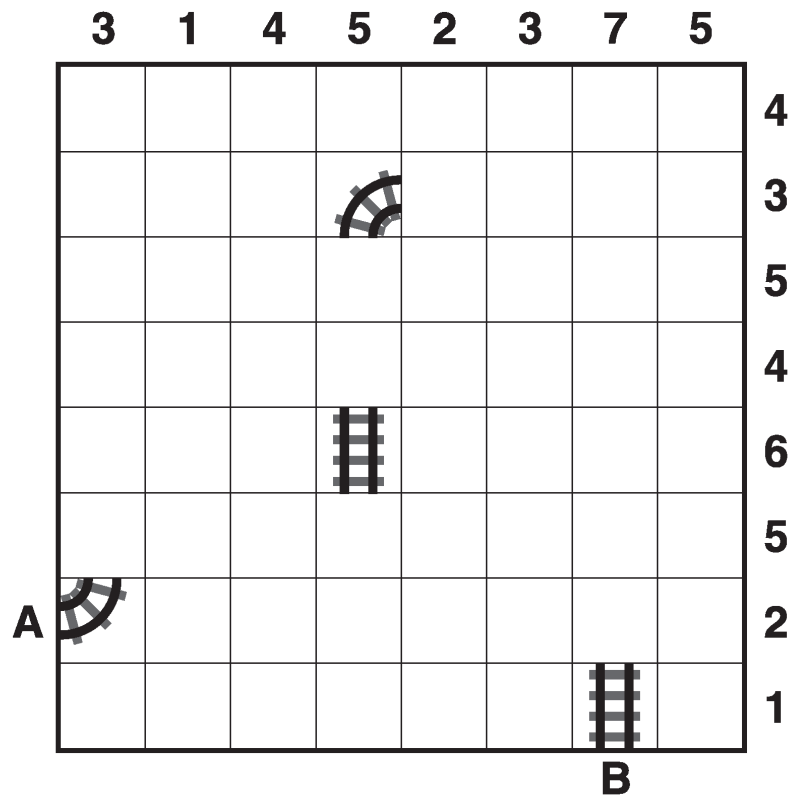
VOL
1



FROM THE UK'S No.1 PUZZLE PUBLISHER



36



MIGHTY MAGICAL FUN ACTIVITY PAD

Puzzler PUZZLES • GAMES • COLOURING

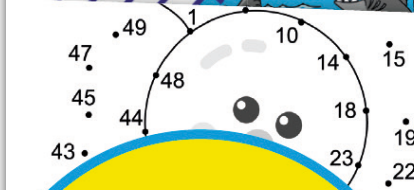
MIGHTY

128 PAGES OF SUMMER FUN!

MAGICAL

FUN ACTIVITY PAD

£4.99



4 PRIZES to be WON!

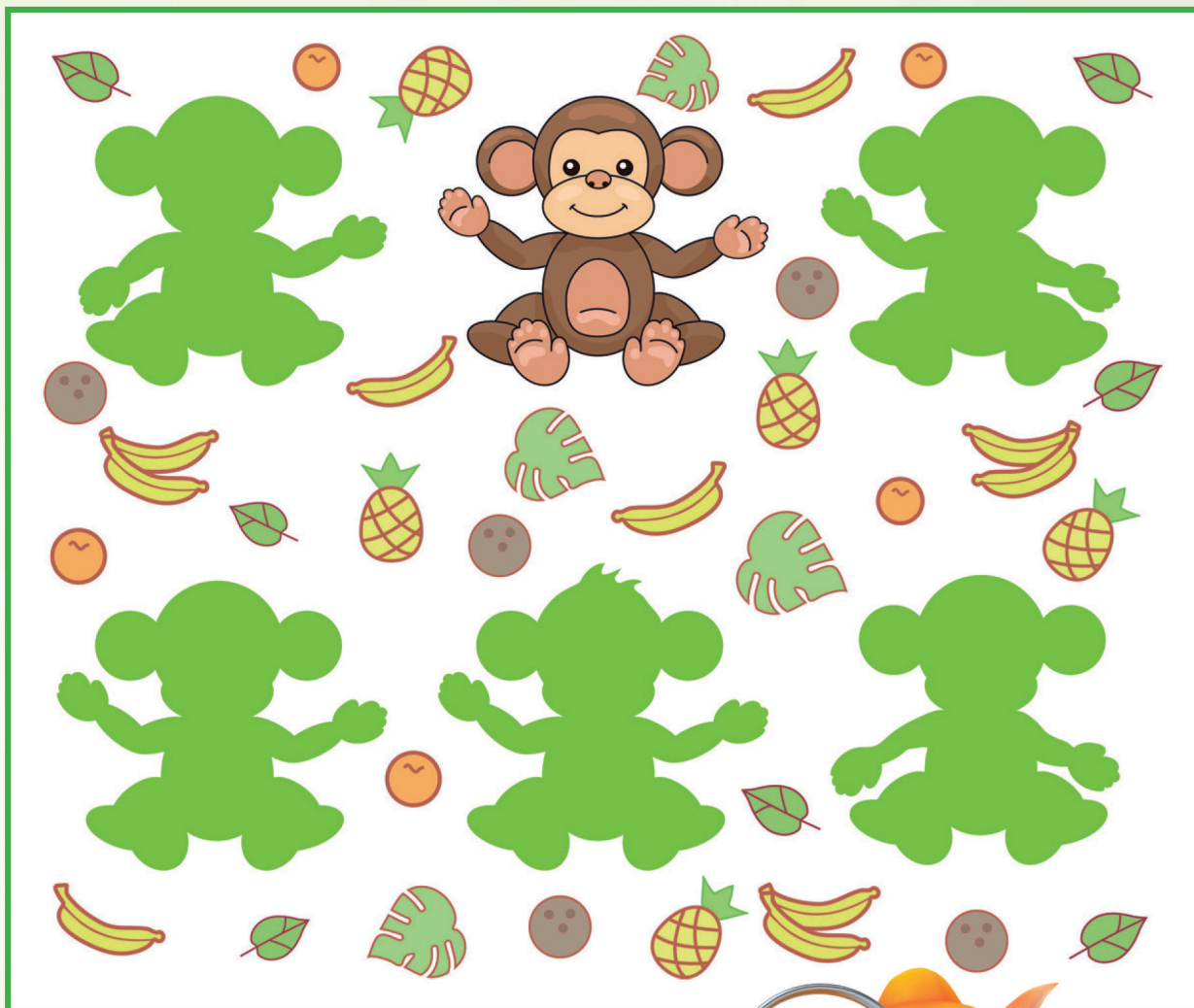
PETS ALIVE DANCING LLAMA!



FOR KIDS AGED 4+

Shadow Match

Find the monkey's correct shadow.



Seaside Fun

Can you work out these sums?
Write your answers on the blank beach balls.

 $2 + 3 = 5$ 

 $5 + 5 =$ 

 $8 + 1 =$ 

 $4 + 3 =$ 

 $6 + 2 =$ 

I've done the first one to help you. Can you complete the rest?





QUIZ MASTER



QUIZZES

500 NEW

10,000 GENERAL KNOWLEDGE QUESTIONS

QUIZ 483 – Pot Luck

ANSWERS ON PAGE 485

- 1 In the group Crosby, Stills, Nash & Young, what was the first name of Nash?
- 2 In which US city would you find the Padres baseball team?
- 3 What cabinet post in the British Government did Edward Grey hold at the outbreak of World War 1?
- 4 What type of creature is a krait?
- 5 Which animal's name derives from a Latin word meaning "spirit of the dead"?
- 6 In what decade was John Keats born?
- 7 *Zensai* in Japanese cuisine are what part of a meal?
- 8 What was the birth name of Dame Nellie Melba?
- 9 Who voiced the character of Rapunzel in the animated film *Tangled*?
- 10 Who was the first woman to hold the post of Lord Mayor of London (1983-84)?
- 11 *For The Russian People* is the political newspaper of which party?
- 12 What does a heortologist study?
- 13 Abolished in 2000, for what did the initials MIRAS stand?
- 14 In what decade did Juan Perón win his first presidential election?
- 15 Sanssouci was the summer palace of which king?
- 16 In 1957, who won the Wimbledon women's singles title against her doubles partner Darlene Hard, with whom she also won the women's doubles title?
- 17 Tarot, played by Michael MacKenzie, was the main character in which 1970s TV series?
- 18 What term is given to the balance of light and shade in a piece of work?
- 19 Of what is algophobia a fear?
- 20 What was the name of the first balloon to cross the Pacific, a feat achieved in 1981?

Answers to QUIZ 481 – Pot Luck

- | | | | |
|----|------------------------------------|----|-----------------------------|
| 1 | <i>The Two Gentlemen of Verona</i> | 11 | <i>The Muppet Show</i> |
| 2 | Spartak Moscow | 12 | The Jimi Hendrix Experience |
| 3 | Ruth Brown | 13 | Sir Ebenezer Howard |
| 4 | The philosophy of knowledge | 14 | France |
| 5 | 1900s (1903) | 15 | Turnip Winter |
| 6 | Thomas Moore | 16 | Frank |
| 7 | Pelham Warner | 17 | Willard Van Orman Quine |
| 8 | Newcastle-upon-Tyne | 18 | The Solomon Islands |
| 9 | 1770 | 19 | Mallow (<i>Malvaceae</i>) |
| 10 | Sweets | 20 | Pris |

Easy

Medium

Hard